

Thera-Paw Boot Sizing Chart



Thera-Paw boots provide a snug fit throughout the paw, wrist, or ankle. Please remember that we can modify our Thera-Paw boots to provide a custom fit for your dog. Please follow the instructions below to determine the best fit for your dog or cat.

	A Measurement	B Measurement	C Measurement	D Measurement	E Measurement	Fits most dogs weighing ON AV- ERAGE <i>lbs</i>
Thera-Paw Boot SIZE	Paw Width <i>inches</i>	Paw Length <i>inches</i>	Paw Girth <i>inches</i>	Wrist/ Ankle Girth <i>inches</i>	Wrist/ Ankle Height <i>inches</i>	
T/B S <i>small</i>	2"	2 ½"	up to 3"	up to 3"	2"	15 to 35
T/C S/M <i>small/medium</i>	2 ¼"	2 ¾"	up to 4"	up to 3 ½"	2 ½"	30 to 50
T/D S/M2 <i>small/ medium2</i>	2 ½"	3"	up to 5 ¼"	up to 4"	2 ½"	40 to 70
T/E M <i>medium</i>	2 ¾"	3 ½"	up to 6 ½"	up to 4 ½"	2 ¾"	60 to 90
T/F M/L <i>medium/ large</i>	3"	3 ¾"	up to 6 ¾"	up to 5"	3 ½"	80 to 110
T/G L <i>large</i>	3 ½"	4 ¼"	up to 7 ½"	up to 6"	4"	100 to 130

© 2016 Thera-Paw, Inc

Tel: 908-439-9139
Fax: 908-439-9239
Email: questions@therapaw.com
Email : orders@therapaw.com
Visit: www.thera-paw.com

Follow the instructions to determine the best fit for your Pet's Thera-Paw Boot.

Trace Your Dog's Paw (See figure A)

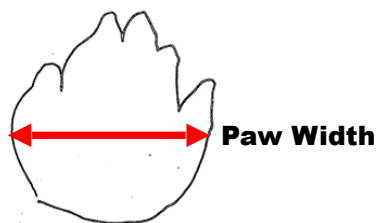
- A. Place a piece of paper on a hard floor surface.
- B. Have your dog stand and bear weight with the affected paw on the piece of paper.
- C. Trace the outline of the paw. Keep your pen in continuous contact with the paw.

Figure (A)
Paw Tracing



1. **Measure the Paw Width.** From your paw tracing, measure the two widest points on each side of the paw. (See figure B)

Figure (B)



2. **Measure the Paw Length.** Measure the length of the paw, starting from the bottom of the paw pad to the top of the nail. (See figure C)

Figure (C)



3. **Measure the Paw Girth.** Wrap a tape measure around the widest section of the paw, including the knuckles. (See figure D)

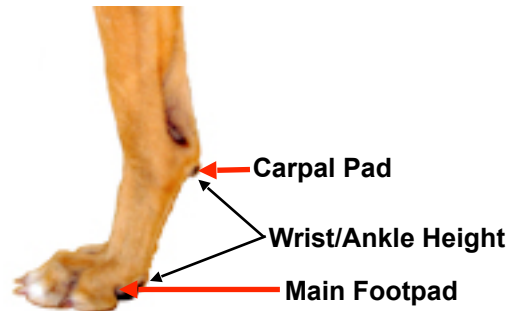
Figure (D)



4. **Measure the Height of your dog's Wrist/Ankle.**

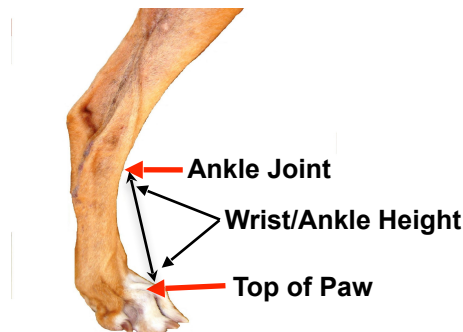
A) If the boot is for your dog's **front leg**, measure the height from the **rear** side of the front leg. Measure from the main footpad to the base of the carpal pad. (*See Figure E to measure Front Leg*)

Figure (E)
Front Leg



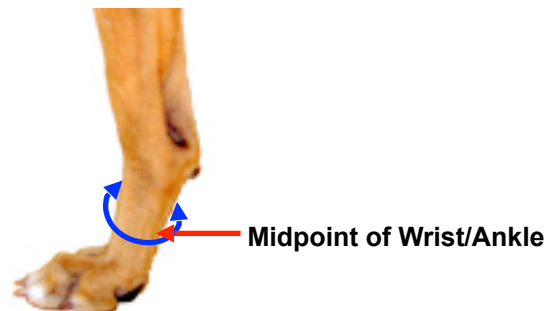
B) If the boot is for your dog's **back leg**, measure the height from the **front** side of the back leg. Measuring the height from the top of the paw to the ankle joint. (*See Figure F to measure Back Leg*)

Figure (F)
Back Leg



5. **Measure the Girth of the Wrist/Ankle.** Using a measuring tape, measure around the midpoint of your dog's wrist/ankle. (*See figure G*)

Figure (G)



6. **Compare your measurements** with those on the sizing chart to determine the correct Thera-Paw size for your dog.

Helpful Hints and Other Useful Information

1. If you can, find someone to help you; This person can help support the dog in a standing position while you measure.
2. When tracing your dog's paw, place the piece of paper on a hard surface (e.g., wood or tile floor) and not a thick, carpeted surface or the tracing will not be accurate.
3. Hold the piece of paper down on the ground or your dog may slip.
4. If your dog is nervous about bearing weight on the piece of paper, lift his/her other paw off the ground so that he/she will need to bare weight on the affected paw.
5. If your dog is not able to bear weight on the affected paw because of pain or a wound, measure the same paw (**Front** or **Back**) on the opposite side AS LONG AS that paw is similar in size and shape.
6. If the affected paw is abnormally shaped in any way (e.g., toe amputation, digital deformities) please consult with us before purchasing the Thera-Paw boot. It is also helpful if you send us a digital photo of your dog's affected paw. Please e-mail your photo to: questions@therapaw.com.
7. A metal tape measure works great for height, length, and width measurements.
8. Use a soft tape for the girth measurements. If you do not have a tape measure, you can use a piece of string and a marker to document the girth measurements.

Thera-Paw Boot Custom Modifications

1. Custom modifications can be made for an additional charge.
2. Determine the correct Thera-Paw size using the **Paw Width (A)**, **Length (B)**, and **Girth (C)** measurements. Then, measure your dog's **Wrist/Ankle Circumference (D)** and **Height (E)**.
3. If your dog's paw **Girth (C)** is WIDER (your measurement is greater) than the determined paw size, then the Thera-Paw boot needs to be widened (this style modification is called the "Expanded Toe Box").
4. If your dog's **Wrist/Ankle Circumference (D)** is WIDER (your measurement is greater) than the determined paw size, then the Thera-Paw boot cuff needs to be widened [we widen the cuff of the boot by adding more neoprene (stretchy material) to the cuff].
5. If your dog's **Wrist/Ankle Height (E)** is SHORTER (your measurement is less) than the determined paw size, then the Thera-Paw boot cuff needs to be cut down.
6. Most custom modifications can be done in 1-3 business days. Please account for this additional time before placing your order.
7. Other modifications are also possible. Please contact us for more information on modifications (908-439-9139; questions@therapaw.com).